

# THERE'S NO PLACE LIKE HOME

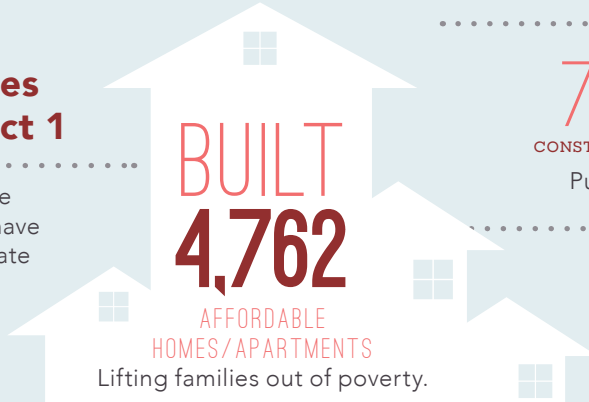
..... *in the* .....

## 1<sup>ST</sup> ASSEMBLY DISTRICT

Home is the foundation for life. All success begins with having an affordable place to live.

### Transforming Lives in Assembly District 1

Since 1986, affordable-home developers in your district have worked through public-private partnerships and:



### CREATED

**7,667** and **2,095**  
CONSTRUCTION JOBS PERMANENT JOBS

Putting constituents back to work.

### GENERATED

**\$148** MILLION

in ANNUAL ECONOMIC ACTIVITY  
Boosting the local economy.

### KINGS BEACH HOUSING NOW



**Kings Beach Housing Now stands out** as a model for affordable development that transforms lives, by addressing the urgent need for affordable workforce housing in Kings Beach while helping to protect the natural beauty of Lake Tahoe and its surrounding environment. A unique example of rural infill development, this 77-unit project promotes a healthier environment through green building, design features, and stormwater management. Social services are conveniently offered on-site.

This development was partially financed using Low Income Housing Tax Credits and the state Infill Infrastructure Grant Program.

## FEDERAL *and* STATE

INVESTMENT *are* ESSENTIAL

### California's long-standing housing crisis

demands a comprehensive and sustainable plan to increase the supply of housing affordable to families struggling to get by. Increasing the supply of housing will not only stabilize families, it will create jobs and make California competitive again.

## The Housing Affordability Crisis *is* Solvable

**Lives have already been positively** changed in your district by affordable developments. Everyone talks about California's high cost of housing—this is the moment leaders like you can support bold solutions to do something about it.

Use your legislative power to invest significant state funds in housing to lift more of your constituents out of poverty and create a meaningful legacy you can be proud of.

### Close the Gap

**Developers have to pull together** a complicated array of public and private funding sources to build affordable apartments. But, massive state and federal disinvestment in housing has left a huge and growing gap, making affordable home development less feasible.

