

THERE'S NO PLACE LIKE HOME

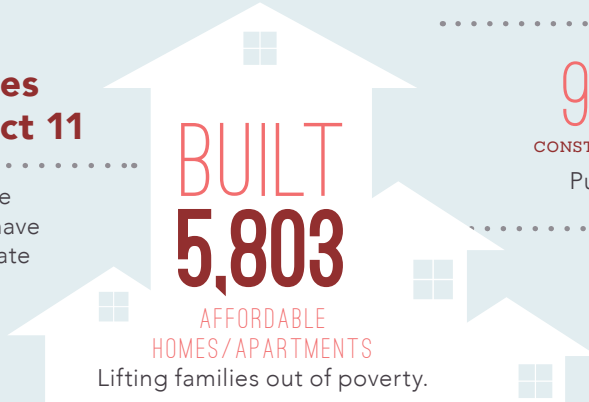
..... in the

11TH ASSEMBLY DISTRICT

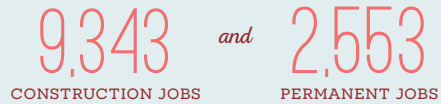
Home is the foundation for life. All success begins with having an affordable place to live.

Transforming Lives in Assembly District 11

Since 1986, affordable-home developers in your district have worked through public-private partnerships and:



CREATED



Putting constituents back to work.

GENERATED



in ANNUAL ECONOMIC ACTIVITY
Boosting the local economy.

COTTONWOOD CREEK



Cottonwood Creek Apartments stand out as a model for affordable development that transforms lives. This 90-unit affordable community was designed with many environmentally-friendly features such as landscaping that minimizes the buildings' solar gain in the summer, roof-top solar panels that supply electricity for the common areas, and energy- and water-efficient fixtures and appliances throughout. Cottonwood is conveniently located within one mile of schools, shopping centers, a park, a library, and public transit.

Cottonwood Creek was partially financed using Low Income Housing Tax Credits and the state Multifamily Housing Program.

FEDERAL and STATE

INVESTMENT are ESSENTIAL

California's long-standing housing crisis demands a comprehensive and sustainable plan to increase the supply of housing affordable to families struggling to get by. Increasing the supply of housing will not only stabilize families, it will create jobs and make California competitive again.

The Housing Affordability Crisis is Solvable

Lives have already been positively changed in your district by affordable developments. Everyone talks about California's high cost of housing—this is the moment leaders like you can support bold solutions to do something about it.

Use your legislative power to invest significant state funds in housing to lift more of your constituents out of poverty and create a meaningful legacy you can be proud of.

Close the Gap

Developers have to pull together a complicated array of public and private funding sources to build affordable apartments. But, massive state and federal disinvestment in housing has left a huge and growing gap, making affordable home development less feasible.

