

THERE'S NO PLACE LIKE HOME

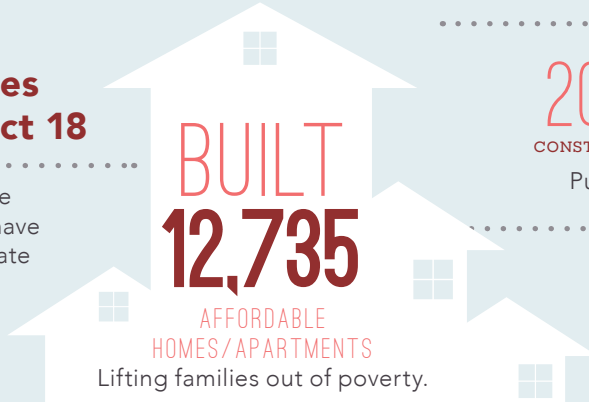
..... *in the*

18TH ASSEMBLY DISTRICT

Home is the foundation for life. All success begins with having an affordable place to live.

Transforming Lives in Assembly District 18

Since 1986, affordable-home developers in your district have worked through public-private partnerships and:



..... **CREATED**

20,503 and **5,603**
CONSTRUCTION JOBS PERMANENT JOBS

Putting constituents back to work.

..... **GENERATED**

\$395 MILLION

in ANNUAL ECONOMIC ACTIVITY
Boosting the local economy.



CATHEDRAL GARDENS

Cathedral Gardens stands out as a model for affordable development that transforms lives. Centrally located near downtown Oakland, 1/4 mile from BART, and adjacent to AC transit, the community consists of 100 affordable homes for families, seniors, and people with disabilities. One of its three buildings is the restored former rectory originally built in 1916 to house staff of the Saint Francis de Sales Cathedral.

Cathedral Gardens was partially financed using Low Income Housing Tax Credits and the Mental Health Services Act Housing Program.

FEDERAL *and* STATE

INVESTMENT *are* ESSENTIAL

California's long-standing housing crisis

demands a comprehensive and sustainable plan to increase the supply of housing affordable to families struggling to get by. Increasing the supply of housing will not only stabilize families, it will create jobs and make California competitive again.

The Housing Affordability Crisis *is* Solvable

Lives have already been positively changed in your district by affordable developments. Everyone talks about California's high cost of housing—this is the moment leaders like you can support bold solutions to do something about it.

Use your legislative power to invest significant state investment in housing to lift more of your constituents out of poverty and create a meaningful legacy you can be proud of.

Close the Gap

Developers have to pull together

a complicated array of public and private funding sources to build affordable apartments. But, massive state and federal disinvestment in housing has left a huge and growing gap, making affordable home development less feasible.

