

# THERE'S NO PLACE LIKE HOME

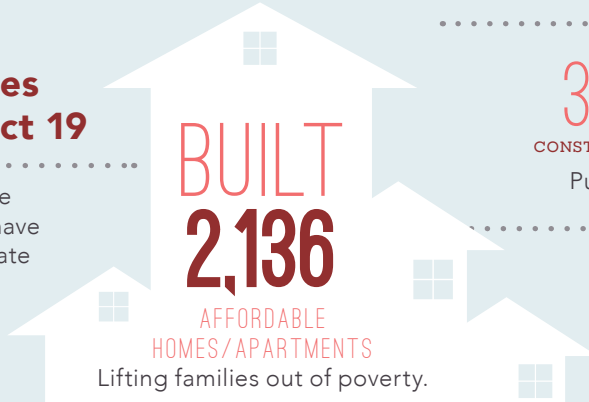
..... in the .....

## 19<sup>TH</sup> ASSEMBLY DISTRICT

Home is the foundation for life. All success begins with having an affordable place to live.

### Transforming Lives in Assembly District 19

Since 1986, affordable-home developers in your district have worked through public-private partnerships and:



### CREATED

**3,439** and **940**  
CONSTRUCTION JOBS PERMANENT JOBS  
Putting constituents back to work.

### GENERATED

**\$66.3 MILLION**  
in ANNUAL ECONOMIC ACTIVITY  
Boosting the local economy.

### 1100 OCEAN AVE



**1100 Ocean Ave. stands out** as a model for affordable development that transforms lives. This development is a key component of the Balboa Park Station Area Plan and includes include 71 affordable units for low income families and young adults that have recently aged out of the foster care system, four neighborhood-serving retail spaces on the ground floor, parking spaces dedicated to City Carshare, and secured bicycle storage.

1100 Ocean Ave. was partially financed using Low Income Housing Tax Credits, the state Multifamily Housing Program, and the Mental Health Services Act Housing Program.

## FEDERAL and STATE

INVESTMENT are ESSENTIAL

**California's long-standing housing crisis** demands a comprehensive and sustainable plan to increase the supply of housing affordable to families struggling to get by. Increasing the supply of housing will not only stabilize families, it will create jobs and make California competitive again.

## The Housing Affordability Crisis is Solvable

**Lives have already been positively** changed in your district by affordable developments. Everyone talks about California's high cost of housing—this is the moment leaders like you can support bold solutions to do something about it.

Use your legislative power to invest significant state investment in housing to lift more of your constituents out of poverty and create a meaningful legacy you can be proud of.

### Close the Gap

**Developers have to pull together** a complicated array of public and private funding sources to build affordable apartments. But, massive state and federal disinvestment in housing has left a huge and growing gap, making affordable home development less feasible.

