

# THERE'S NO PLACE LIKE HOME

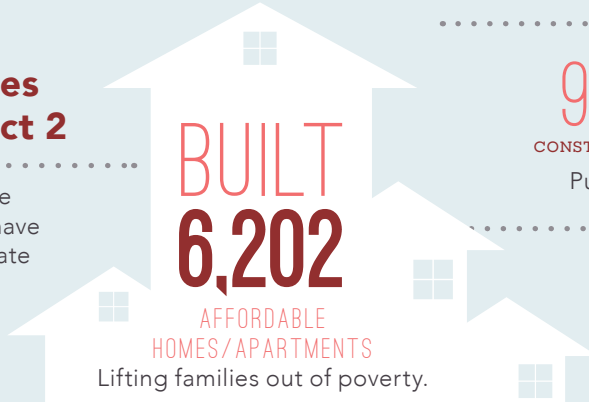
..... in the .....

## 2<sup>ND</sup> ASSEMBLY DISTRICT

Home is the foundation for life. All success begins with having an affordable place to live.

### Transforming Lives in Assembly District 2

Since 1986, affordable-home developers in your district have worked through public-private partnerships and:



#### CREATED

**9,985** and **2,729**  
CONSTRUCTION JOBS PERMANENT JOBS

Putting constituents back to work.

#### GENERATED

**\$192 MILLION**

in ANNUAL ECONOMIC ACTIVITY  
Boosting the local economy.



ARROYO POINT

**Arroyo Point stands out** as a model for affordable development that transforms lives, providing 70 affordable rental homes in Santa Rosa. Convenient to local shopping, transportation, and parks, the property also offers youth arts programming in the on-site community room. This charming tree-lined community includes a children's play structure, a basketball court, and a picnic area.

This development was partially financed using Low Income Housing Tax Credits and the state Multifamily Housing Program.

## FEDERAL and STATE

INVESTMENT are ESSENTIAL

**California's long-standing housing crisis** demands a comprehensive and sustainable plan to increase the supply of housing affordable to families struggling to get by. Increasing the supply of housing will not only stabilize families, it will create jobs and make California competitive again.

## The Housing Affordability Crisis is Solvable

**Lives have already been positively** changed in your district by affordable developments. Everyone talks about California's high cost of housing—this is the moment leaders like you can support bold solutions to do something about it.

Use your legislative power to invest significant state funds in housing to lift more of your constituents out of poverty and create a meaningful legacy you can be proud of.

### Close the Gap

**Developers have to pull together** a complicated array of public and private funding sources to build affordable apartments. But, massive state and federal disinvestment in housing has left a huge and growing gap, making affordable home development less feasible.

