

THERE'S NO PLACE LIKE HOME

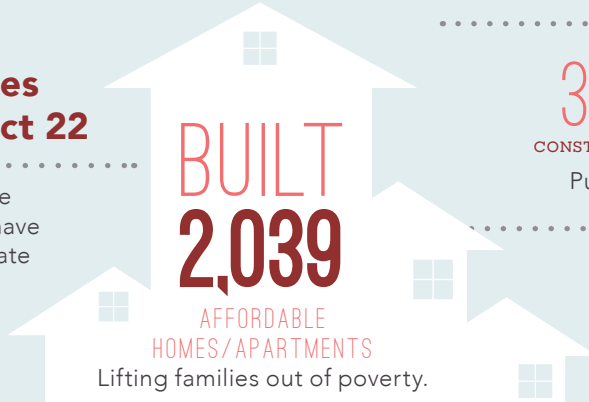
..... *in the*

22ND ASSEMBLY DISTRICT

Home is the foundation for life. All success begins with having an affordable place to live.

Transforming Lives in Assembly District 22

Since 1986, affordable-home developers in your district have worked through public-private partnerships and:



CREATED

3,283 and **897**
CONSTRUCTION JOBS PERMANENT JOBS

Putting constituents back to work.

GENERATED

\$63.3 MILLION

in ANNUAL ECONOMIC ACTIVITY
Boosting the local economy.



Magnolia Plaza Senior Apartments stand out as a model for affordable development that transforms lives. The 125 one- and two-bedroom homes for low-income seniors Plaza is adjacent to an architecturally distinguished surplus school building, which was renovated by the City of South San Francisco as a senior center for the residents of both the development and the larger community. The complex includes a historic reconstruction of the city's original one-room schoolhouse as a project office and community room.

FEDERAL *and* STATE

INVESTMENT *are* ESSENTIAL

California's long-standing housing crisis demands a comprehensive and sustainable plan to increase the supply of housing affordable to families struggling to get by. Increasing the supply of housing will not only stabilize families, it will create jobs and make California competitive again.

The Housing Affordability Crisis *is* Solvable

Lives have already been positively changed in your district by affordable developments. Everyone talks about California's high cost of housing—this is the moment leaders like you can support bold solutions to do something about it.

Use your legislative power to invest significant state investment in housing to lift more of your constituents out of poverty and create a meaningful legacy you can be proud of.

Close the Gap

Developers have to pull together a complicated array of public and private funding sources to build affordable apartments. But, massive state and federal disinvestment in housing has left a huge and growing gap, making affordable home development less feasible.

