

# THERE'S NO PLACE LIKE HOME

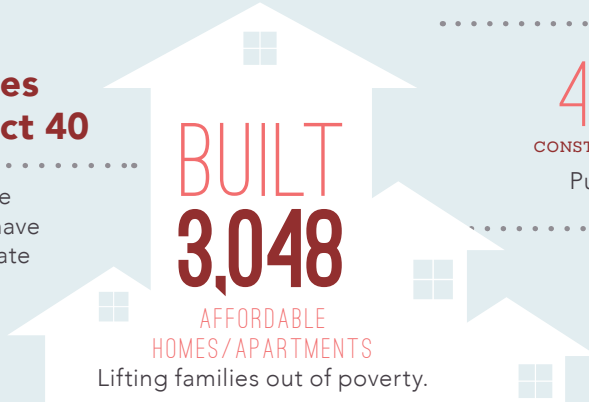
..... in the .....

## 40<sup>TH</sup> ASSEMBLY DISTRICT

Home is the foundation for life. All success begins with having an affordable place to live.

### Transforming Lives in Assembly District 40

Since 1986, affordable-home developers in your district have worked through public-private partnerships and:



### CREATED

4,907 and 1,341  
CONSTRUCTION JOBS PERMANENT JOBS

Putting constituents back to work.

### GENERATED

**\$94.6 MILLION**

in ANNUAL ECONOMIC ACTIVITY  
Boosting the local economy.



**Heritage Pointe stands out** as a model for affordable development that transforms lives. Completed in 2002, Heritage Pointe provides 49 units of award-winning affordable homes for low-income seniors.

HOPE's Connections to Care program ensures that residents have basic needs met, continue to exercise their mind and body, and remain socially connected. The program includes care managers who work one-on-one to ensure they are linked to appropriate benefit programs and have access to needed medical appointments and medications.

## FEDERAL and STATE

INVESTMENT *are* ESSENTIAL

**California's long-standing housing crisis** demands a comprehensive and sustainable plan to increase the supply of housing affordable to families struggling to get by. Increasing the supply of housing will not only stabilize families, it will create jobs and make California competitive again.

## The Housing Affordability Crisis is Solvable

**Lives have already been positively** changed in your district by affordable developments. Everyone talks about California's high cost of housing—this is the moment leaders like you can support bold solutions to do something about it.

Use your legislative power to invest significant state investment in housing to lift more of your constituents out of poverty and create a meaningful legacy you can be proud of.

### Close the Gap

**Developers have to pull together** a complicated array of public and private funding sources to build affordable apartments. But, massive state and federal disinvestment in housing has left a huge and growing gap, making affordable home development less feasible.

