

THERE'S NO PLACE LIKE HOME

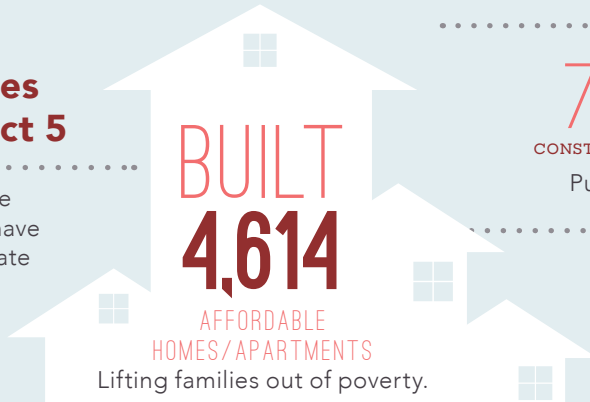
..... *in the*

5TH ASSEMBLY DISTRICT

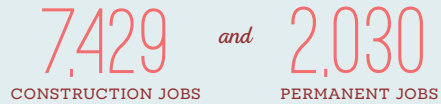
Home is the foundation for life. All success begins with having an affordable place to live.

Transforming Lives in Assembly District 5

Since 1986, affordable-home developers in your district have worked through public-private partnerships and:



CREATED



Putting constituents back to work.

GENERATED



in ANNUAL ECONOMIC ACTIVITY
Boosting the local economy.



ASPEN VILLAGE

Aspen Village at Mammoth Creek stands out as a model for affordable development that transforms lives. This 48 unit workforce housing community consists of two and three bedroom rental units. The second phase of this project features 24 affordable for-sale townhomes. Conveniently located near public transit, shopping, schools, a park and other services, this beautiful property has excellent amenities including a community room with a kitchen, a computer room and a playground.

This development was partially financed using Low Income Housing Tax Credits.

FEDERAL *and* STATE

INVESTMENT *are* ESSENTIAL

California's long-standing housing crisis demands a comprehensive and sustainable plan to increase the supply of housing affordable to families struggling to get by. Increasing the supply of housing will not only stabilize families, it will create jobs and make California competitive again.

The Housing Affordability Crisis *is* Solvable

Lives have already been positively changed in your district by affordable developments. Everyone talks about California's high cost of housing—this is the moment bold leaders like you can support bold solutions to do something about it.

Use your legislative power to invest significant state funds in housing to lift more of your constituents out of poverty and create a meaningful legacy you can be proud of.

Close the Gap

Developers have to pull together a complicated array of public and private funding sources to build affordable apartments. But, massive state and federal disinvestment in housing has left a huge and growing gap, making affordable home development less feasible.

