

THERE'S NO PLACE LIKE HOME

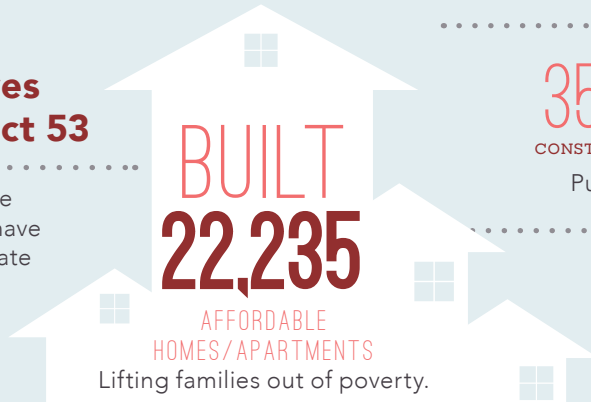
..... in the

53RD ASSEMBLY DISTRICT

Home is the foundation for life. All success begins with having an affordable place to live.

Transforming Lives in Assembly District 53

Since 1986, affordable-home developers in your district have worked through public-private partnerships and:



CREATED

35,798 and **9,783**
CONSTRUCTION JOBS PERMANENT JOBS

Putting constituents back to work.

GENERATED

\$690 MILLION

in ANNUAL ECONOMIC ACTIVITY
Boosting the local economy.

CAROLINE SEVERANCE MANOR



Caroline Severance Manor stands out as a model for affordable development that transforms lives. This 85-unit supportive housing and family property was completed in 2013. In a unique partnership with the LA Departments of Mental Health, the family units are targeted to households in which children are cared for by a relative other than their parent.

In addition to providing the housing, the development team worked with neighboring First Unitarian Church of Los Angeles to build a new, 5,000-square-foot, licensed child-care facility to replace the outdated one the church had built in the 1960s.

FEDERAL and STATE

INVESTMENT *are* ESSENTIAL

California's long-standing housing crisis

demands a comprehensive and sustainable plan to increase the supply of housing affordable to families struggling to get by. Increasing the supply of housing will not only stabilize families, it will create jobs and make California competitive again.

The Housing Affordability Crisis is Solvable

Lives have already been positively changed in your district by affordable developments. Everyone talks about California's high cost of housing—this is the moment bold leaders like you can support bold solutions to do something about it.

Use your legislative power to invest significant state investment in housing to lift more of your constituents out of poverty and create a meaningful legacy you can be proud of.

Close the Gap

Developers have to pull together

a complicated array of public and private funding sources to build affordable apartments. But, massive state and federal disinvestment in housing has left a huge and growing gap, making affordable home development less feasible.

