

THERE'S NO PLACE LIKE HOME

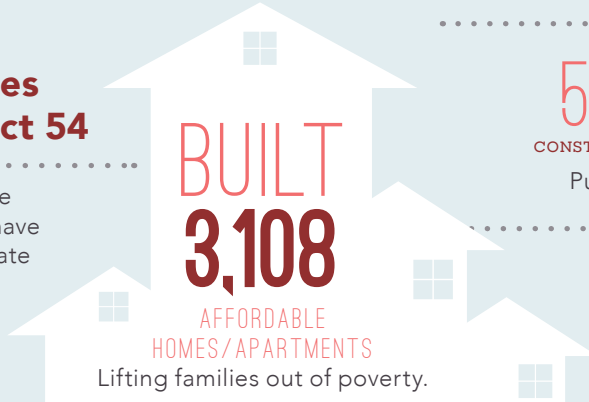
..... in the

54TH ASSEMBLY DISTRICT

Home is the foundation for life. All success begins with having an affordable place to live.

Transforming Lives in Assembly District 54

Since 1986, affordable-home developers in your district have worked through public-private partnerships and:



CREATED

5,004 and **1,368**
CONSTRUCTION JOBS PERMANENT JOBS

Putting constituents back to work.

GENERATED

\$96.4 MILLION

in ANNUAL ECONOMIC ACTIVITY
Boosting the local economy.

JEFFERSON PARK TERRACE



Jefferson Park Terrace stands out as a model for affordable development that transforms lives. This 60-unit affordable community includes an on-site resident services coordinator who helps with case management, civic engagement, health and educational services as well as employment training. In a twist tying the past to the present, the building was certified LEED Gold but is also designed in the Art Deco "Streamline Moderne" style to work seamlessly into the Craftsman-style neighborhood.

This project was partially financed using Low Income Housing Tax Credits.

FEDERAL and STATE

INVESTMENT *are* ESSENTIAL

California's long-standing housing crisis demands a comprehensive and sustainable plan to increase the supply of housing affordable to families struggling to get by. Increasing the supply of housing will not only stabilize families, it will create jobs and make California competitive again.

The Housing Affordability Crisis is Solvable

Lives have already been positively changed in your district by affordable developments. Everyone talks about California's high cost of housing—this is the moment leaders like you can support bold solutions to do something about it.

Use your legislative power to invest significant state investment in housing to lift more of your constituents out of poverty and create a meaningful legacy you can be proud of.

Close the Gap

Developers have to pull together a complicated array of public and private funding sources to build affordable apartments. But, massive state and federal disinvestment in housing has left a huge and growing gap, making affordable home development less feasible.

