

THERE'S NO PLACE LIKE HOME

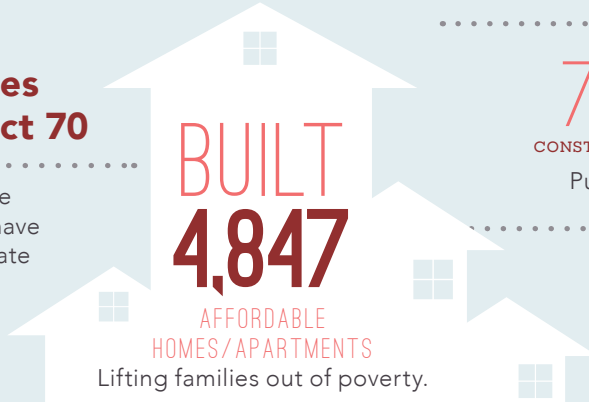
..... in the

70TH ASSEMBLY DISTRICT

Home is the foundation for life. All success begins with having an affordable place to live.

Transforming Lives in Assembly District 70

Since 1986, affordable-home developers in your district have worked through public-private partnerships and:



CREATED

7,804 and **2,133**
CONSTRUCTION JOBS PERMANENT JOBS

Putting constituents back to work.

GENERATED

\$150 MILLION

in ANNUAL ECONOMIC ACTIVITY
Boosting the local economy.



THE PALACE

The Palace stands out as a model for affordable development that transforms lives. Built in 1929, The Palace is an historic, two-story building located on Anaheim Street in Long Beach. Once a hotbed for crime, the hotel was restored and renovated to serve as a home to transitional age emancipated foster youth. Residents have their own private and safe apartment at the Palace Hotel and participate in the dynamic and comprehensive Pathways Transitional Living Program, developed and operated by United Friends of the Children.

This project was partially financed using Low Income Housing Tax Credits.

FEDERAL and STATE

INVESTMENT are ESSENTIAL

California's long-standing housing crisis demands a comprehensive and sustainable plan to increase the supply of housing affordable to families struggling to get by. Increasing the supply of housing will not only stabilize families, it will create jobs and make California competitive again.

The Housing Affordability Crisis is Solvable

Lives have already been positively changed in your district by affordable developments. Everyone talks about California's high cost of housing—this is the moment bold leaders like you can support bold solutions to do something about it.

Use your legislative power to invest significant state investment in housing to lift more of your constituents out of poverty and create a meaningful legacy you can be proud of.

Close the Gap

Developers have to pull together a complicated array of public and private funding sources to build affordable apartments. But, massive state and federal disinvestment in housing has left a huge and growing gap, making affordable home development less feasible.

