

THERE'S NO PLACE LIKE HOME

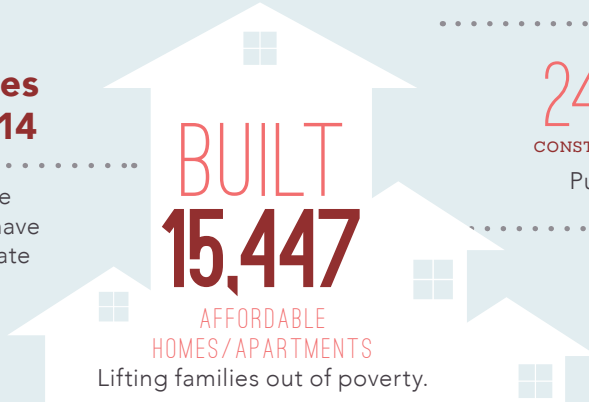
in the

14TH SENATE DISTRICT

Home is the foundation for life. All success begins with having an affordable place to live.

Transforming Lives in Senate District 14

Since 1986, affordable-home developers in your district have worked through public-private partnerships and:



CREATED

24,870 and **6,797**
CONSTRUCTION JOBS PERMANENT JOBS

Putting constituents back to work.

GENERATED

\$479 MILLION

in ANNUAL ECONOMIC ACTIVITY
Boosting the local economy.

LINCOLN-MCKINLEY



Lincoln-McKinley stands out as a model for affordable development that transforms lives. Located in Dinuba, CA, this affordable community includes 11 single-family homes built under the mutual self-help method of construction with homeowners providing over 70 percent of the construction labor. Families not only build their homes and those of their neighbors, they also build an instant community and a sense of place. The homes are conveniently located near a school, public transportation, and other services.

This project was partially financed with the state Self-Help Housing/CalHOME and Joe Serna Farmworker Housing programs

FEDERAL and STATE

INVESTMENT *are* ESSENTIAL

California's long-standing housing crisis

demands a comprehensive and sustainable plan to increase the supply of housing affordable to families struggling to get by. Increasing the supply of housing will not only stabilize families, it will create jobs and make California competitive again.

The Housing Affordability Crisis is Solvable

Lives have already been positively changed in your district by affordable developments. Everyone talks about California's high cost of housing—this is the moment leaders like you can support bold solutions to do something about it.

Use your legislative power to invest significant state investment in housing to lift more of your constituents out of poverty and create a meaningful legacy you can be proud of.

Close the Gap

Developers have to pull together

a complicated array of public and private funding sources to build affordable apartments. But, massive state and federal disinvestment in housing has left a huge and growing gap, making affordable home development less feasible.

