

THERE'S NO PLACE LIKE HOME

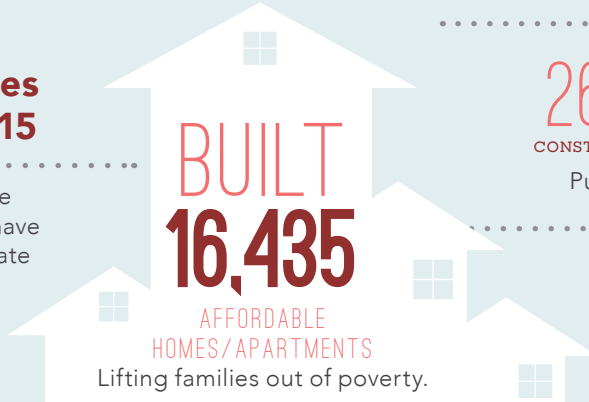
..... in the

15TH SENATE DISTRICT

Home is the foundation for life. All success begins with having an affordable place to live.

Transforming Lives in Senate District 15

Since 1986, affordable-home developers in your district have worked through public-private partnerships and:



CREATED

26,460 and 7,231
CONSTRUCTION JOBS PERMANENT JOBS

Putting constituents back to work.

GENERATED

\$510 MILLION

in ANNUAL ECONOMIC ACTIVITY
Boosting the local economy.



ORVIETO FAMILY

Orvieto Family stands out as a model for affordable development that transforms lives. The 1.72-acre Orvieto site is located approximately three miles South of the San Jose's downtown core. This four-story community offers 92 affordable apartments.

The development is the second phase of Montecito Vista Urban Village, a 29.5-acre master-planned community which, when complete, will include condominiums, apartments and attached townhomes. The community will also include a two-acre public park and 18,000 square feet of retail.

FEDERAL and STATE

INVESTMENT are ESSENTIAL

California's long-standing housing crisis

demands a comprehensive and sustainable plan to increase the supply of housing affordable to families struggling to get by. Increasing the supply of housing will not only stabilize families, it will create jobs and make California competitive again.

The Housing Affordability Crisis is Solvable

Lives have already been positively changed in your district by affordable developments. Everyone talks about California's high cost of housing—this is the moment leaders like you can support bold solutions to do something about it.

Use your legislative power to invest significant state investment in housing to lift more of your constituents out of poverty and create a meaningful legacy you can be proud of.

Close the Gap

Developers have to pull together a complicated array of public and private funding sources to build affordable apartments. But, massive state and federal disinvestment in housing has left a huge and growing gap, making affordable home development less feasible.

