

# THERE'S NO PLACE LIKE HOME

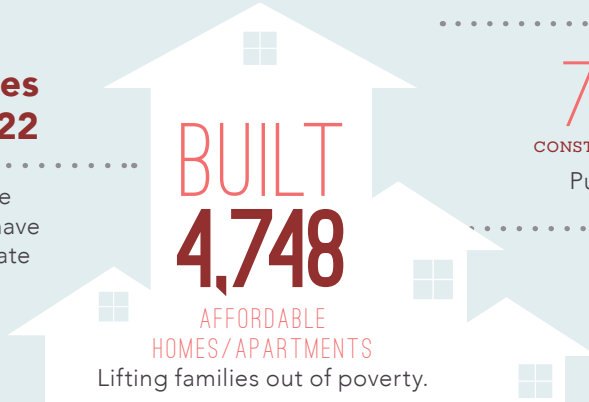
..... in the .....

## 22<sup>ND</sup> SENATE DISTRICT

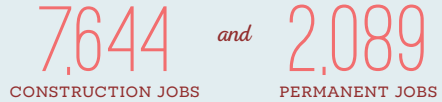
Home is the foundation for life. All success begins with having an affordable place to live.

### Transforming Lives in Senate District 22

Since 1986, affordable-home developers in your district have worked through public-private partnerships and:



### CREATED



Putting constituents back to work.

### GENERATED



Boosting the local economy.

### EL MONTE VETERANS VILLAGE



**El Monte Veterans Village stands out** as a model for affordable development that transforms lives. The new three-story development in the City of El Monte will mean 40 studio apartments and 2,400 square feet of common and recreational space for service delivery targeting homeless Veterans.

As the first permanent supportive community for homeless Veterans in the area, El Monte VeteransVillage addresses the growing rate of homelessness in a community that struggles with uniquely high rates of unemployment and special needs.

## FEDERAL and STATE

INVESTMENT *are* ESSENTIAL

**California's long-standing housing crisis** demands a comprehensive and sustainable plan to increase the supply of housing affordable to families struggling to get by. Increasing the supply of housing will not only stabilize families, it will create jobs and make California competitive again.

## The Housing Affordability Crisis is Solvable

**Lives have already been positively** changed in your district by affordable developments. Everyone talks about California's high cost of housing—this is the moment bold leaders like you can support bold solutions to do something about it.

Use your legislative power to invest significant state investment in housing to lift more of your constituents out of poverty and create a meaningful legacy you can be proud of.

### Close the Gap

**Developers have to pull together** a complicated array of public and private funding sources to build affordable apartments. But, massive state and federal disinvestment in housing has left a huge and growing gap, making affordable home development less feasible.

