

# THERE'S NO PLACE LIKE HOME

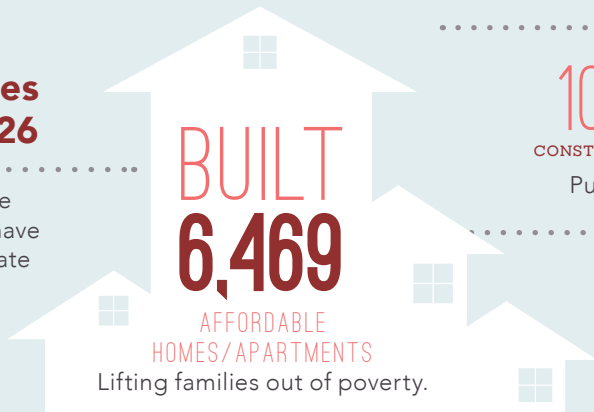
..... in the .....

## 26<sup>TH</sup> SENATE DISTRICT

Home is the foundation for life. All success begins with having an affordable place to live.

### Transforming Lives in Senate District 26

Since 1986, affordable-home developers in your district have worked through public-private partnerships and:



#### CREATED

**10,415** and **2,846**  
CONSTRUCTION JOBS PERMANENT JOBS

Putting constituents back to work.

#### GENERATED

**\$201 MILLION**

in ANNUAL ECONOMIC ACTIVITY  
Boosting the local economy.



**SELMA COMMUNITY HOUSING**

**Selma Community Housing stands out** as a model for affordable development that transforms lives. Recognizing there is limited access to affordable housing for its teachers and staff, this development was built adjacent to Selma Elementary School to maximize land resources for public benefit. Selma Community Housing will provide leasing priorities for 50% of the units to LAUSD employees in an effort to increase employee retention within the school district.

This transit-oriented development is in the heart of Hollywood, only a short walk to the Hollywood and Highland Metro Red Line station.

## FEDERAL and STATE

INVESTMENT *are* ESSENTIAL

### California's long-standing housing crisis

demands a comprehensive and sustainable plan to increase the supply of housing affordable to families struggling to get by. Increasing the supply of housing will not only stabilize families, it will create jobs and make California competitive again.

## The Housing Affordability Crisis is Solvable

**Lives have already been positively** changed in your district by affordable developments. Everyone talks about California's high cost of housing—this is the moment leaders like you can support bold solutions to do something about it.

Use your legislative power to invest significant state investment in housing to lift more of your constituents out of poverty and create a meaningful legacy you can be proud of.

### Close the Gap

**Developers have to pull together** a complicated array of public and private funding sources to build affordable apartments. But, massive state and federal disinvestment in housing has left a huge and growing gap, making affordable home development less feasible.

