

THERE'S NO PLACE LIKE HOME

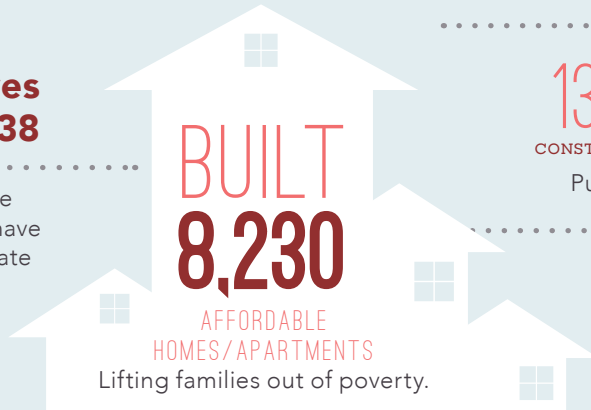
..... in the

38TH SENATE DISTRICT

Home is the foundation for life. All success begins with having an affordable place to live.

Transforming Lives in Senate District 38

Since 1986, affordable-home developers in your district have worked through public-private partnerships and:



CREATED

13,250 and **3,621**
CONSTRUCTION JOBS PERMANENT JOBS

Putting constituents back to work.

GENERATED

\$255 MILLION

in ANNUAL ECONOMIC ACTIVITY
Boosting the local economy.

FORESTER SQUARE



Forester Square stands out as a model for affordable development that transforms lives. This 44-unit affordable family development is located in Santee. A playground area for children and picnic benches, along with a common room with computer access, are in the center of the complex. All exterior and common area lighting is powered by a 30 kilowatt array of solar panels on the roof of the carport.

This project was partially financed using Low Income Housing Tax Credits.

FEDERAL and STATE

INVESTMENT *are* ESSENTIAL

California's long-standing housing crisis demands a comprehensive and sustainable plan to increase the supply of housing affordable to families struggling to get by. Increasing the supply of housing will not only stabilize families, it will create jobs and make California competitive again.

The Housing Affordability Crisis is Solvable

Lives have already been positively changed in your district by affordable developments. Everyone talks about California's high cost of housing—this is the moment bold leaders like you can support bold solutions to do something about it.

Use your legislative power to invest significant state investment in housing to lift more of your constituents out of poverty and create a meaningful legacy you can be proud of.

Close the Gap

Developers have to pull together a complicated array of public and private funding sources to build affordable apartments. But, massive state and federal disinvestment in housing has left a huge and growing gap, making affordable home development less feasible.

