

THERE'S NO PLACE LIKE HOME

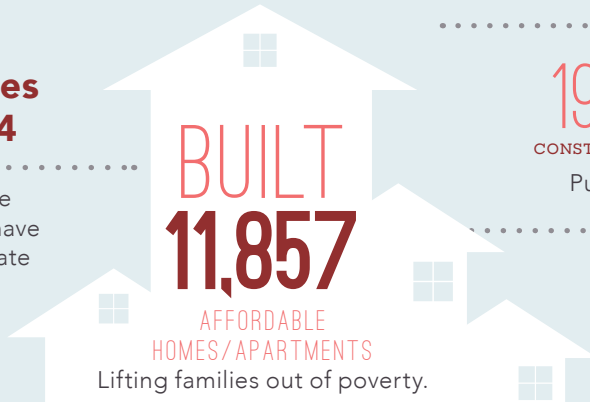
..... in the

4TH SENATE DISTRICT

Home is the foundation for life. All success begins with having an affordable place to live.

Transforming Lives in Senate District 4

Since 1986, affordable-home developers in your district have worked through public-private partnerships and:



CREATED

19,090 and **5,217**
CONSTRUCTION JOBS PERMANENT JOBS

Putting constituents back to work.

GENERATED

\$368 MILLION

in ANNUAL ECONOMIC ACTIVITY
Boosting the local economy.



HILLVIEW RIDGE

Hillview Ridge stands out as a model for affordable development that transforms lives. This project features 71 affordable two, three and four bedroom apartments conveniently located near a bus stop, schools, shopping and other services. The beautiful property has excellent amenities including a community room with a kitchen, a computer center, a playground and a pool.

This development was partially financed using Low Income Housing Tax Credits.

FEDERAL and STATE

INVESTMENT are ESSENTIAL

California's long-standing housing crisis demands a comprehensive and sustainable plan to increase the supply of housing affordable to families struggling to get by. Increasing the supply of housing will not only stabilize families, it will create jobs and make California competitive again.

The Housing Affordability Crisis is Solvable

Lives have already been positively changed in your district by affordable developments. Everyone talks about California's high cost of housing—this is the moment leaders like you can support bold solutions to do something about it.

Use your legislative power to invest significant state funds in housing to lift more of your constituents out of poverty and create a meaningful legacy you can be proud of.

Close the Gap

Developers have to pull together a complicated array of public and private funding sources to build affordable apartments. But, massive state and federal disinvestment in housing has left a huge and growing gap, making affordable home development less feasible.

