

# THERE'S NO PLACE LIKE HOME

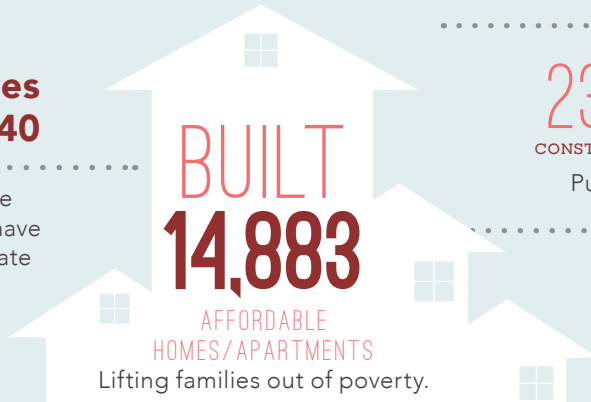
..... *in the* .....

## 40<sup>TH</sup> SENATE DISTRICT

Home is the foundation for life. All success begins with having an affordable place to live.

### Transforming Lives in Senate District 40

Since 1986, affordable-home developers in your district have worked through public-private partnerships and:



#### CREATED

**23,962** and **6,549**  
CONSTRUCTION JOBS PERMANENT JOBS

Putting constituents back to work.

#### GENERATED

**\$462 MILLION**

in ANNUAL ECONOMIC ACTIVITY  
Boosting the local economy.

### PASEO AT COMM22



**Paseo at COMM22 stands out** as a model for affordable development that transforms lives. This 130-unit affordable community is part of a transit-oriented, master-planned community in the Logan Heights neighborhood of San Diego that also includes Victoria at COMM 22, a 70-unit affordable housing property for seniors. The master-planned development also features enhanced plaza areas for public gatherings, strong pedestrian connectivity throughout the site and convenient access to public transportation.

This project was partially financed using Low Income Housing Tax Credits and the Mental Health Services Act Housing Program.

## FEDERAL *and* STATE

INVESTMENT *are* ESSENTIAL

### California's long-standing housing crisis

demands a comprehensive and sustainable plan to increase the supply of housing affordable to families struggling to get by. Increasing the supply of housing will not only stabilize families, it will create jobs and make California competitive again.

## The Housing Affordability Crisis *is* Solvable

**Lives have already been positively** changed in your district by affordable developments. Everyone talks about California's high cost of housing—this is the moment leaders like you can support bold solutions to do something about it.

Use your legislative power to invest significant state investment in housing to lift more of your constituents out of poverty and create a meaningful legacy you can be proud of.

### Close the Gap

#### Developers have to pull together

a complicated array of public and private funding sources to build affordable apartments. But, massive state and federal disinvestment in housing has left a huge and growing gap, making affordable home development less feasible.

