

THERE'S NO PLACE LIKE HOME

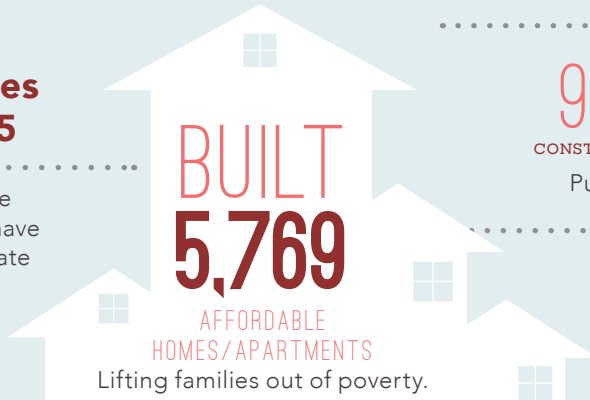
..... *in the*

5TH SENATE DISTRICT

Home is the foundation for life. All success begins with having an affordable place to live.

Transforming Lives in Senate District 5

Since 1986, affordable-home developers in your district have worked through public-private partnerships and:



CREATED

9,288 and **2,538**
CONSTRUCTION JOBS PERMANENT JOBS

Putting constituents back to work.

GENERATED

\$179 MILLION

in ANNUAL ECONOMIC ACTIVITY
Boosting the local economy.



ANCHOR VILLAGE

Anchor Village stands out as a model for affordable development that transforms lives that will provide 50 supportive affordable homes with social services to veterans at risk of homelessness and individuals living with mental illness. Anchor Village is located near several amenities and the Downtown Transit Center and will be designed to LEED Silver standards

Anchor Village was partially financed using Low Income Housing Tax Credits, the Mental Health Services Act Housing Program, and the Affordable Housing and Sustainable Communities Program.

FEDERAL *and* STATE

INVESTMENT *are* ESSENTIAL

California's long-standing housing crisis

demands a comprehensive and sustainable plan to increase the supply of housing affordable to families struggling to get by. Increasing the supply of housing will not only stabilize families, it will create jobs and make California competitive again.

The Housing Affordability Crisis *is* Solvable

Lives have already been positively changed in your district by affordable developments. Everyone talks about California's high cost of housing—this is the moment bold leaders like you can support bold solutions to do something about it.

Use your legislative power to invest significant state funds in housing to lift more of your constituents out of poverty and create a meaningful legacy you can be proud of.

Close the Gap

Developers have to pull together a complicated array of public and private funding sources to build affordable apartments. But, massive state and federal disinvestment in housing has left a huge and growing gap, making affordable home development less feasible.

