

THERE'S NO PLACE LIKE HOME

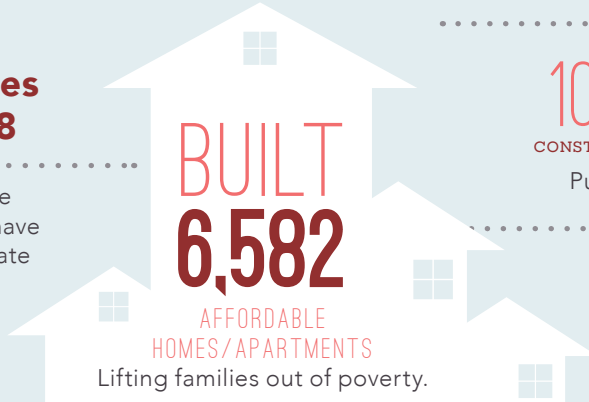
..... *in the*

8TH SENATE DISTRICT

Home is the foundation for life. All success begins with having an affordable place to live.

Transforming Lives in Senate District 8

Since 1986, affordable-home developers in your district have worked through public-private partnerships and:



CREATED

10,597 and **2,896**
CONSTRUCTION JOBS PERMANENT JOBS

Putting constituents back to work.

GENERATED

\$204 MILLION

in ANNUAL ECONOMIC ACTIVITY
Boosting the local economy.



AVENA BELLA

Avena Bella stands out as a model for affordable development that transforms lives. Located adjacent to Cunningham Elementary School, and within half a mile of Lander Marketplace Shopping Center, Sam's Food City, and existing bus stops in Turlock, this affordable community consists of garden-style two- and three-bedroom apartments and features generous amounts of green and open space areas, including strategically placed trees that help shade both indoor and outdoor living spaces.

Avena Bella was partially financed using Low Income Housing Tax Credits.

FEDERAL *and* STATE

INVESTMENT *are* ESSENTIAL

California's long-standing housing crisis

demands a comprehensive and sustainable plan to increase the supply of housing affordable to families struggling to get by. Increasing the supply of housing will not only stabilize families, it will create jobs and make California competitive again.

The Housing Affordability Crisis *is* Solvable

Lives have already been positively changed in your district by affordable developments. Everyone talks about California's high cost of housing—this is the moment leaders like you can support bold solutions to do something about it.

Use your legislative power to invest significant state funds in housing to lift more of your constituents out of poverty and create a meaningful legacy you can be proud of.

Close the Gap

Developers have to pull together a complicated array of public and private funding sources to build affordable apartments. But, massive state and federal disinvestment in housing has left a huge and growing gap, making affordable home development less feasible.

