

THERE'S NO PLACE LIKE HOME

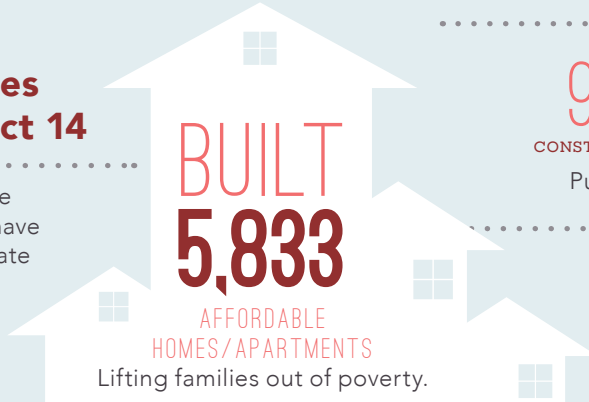
..... in the

14TH ASSEMBLY DISTRICT

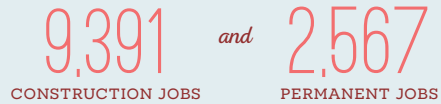
Home is the foundation for life. All success begins with having an affordable place to live.

Transforming Lives in Assembly District 14

Since 1986, affordable-home developers in your district have worked through public-private partnerships and:



CREATED



Putting constituents back to work.

GENERATED



Boosting the local economy.



TEMPLE ART LOFTS

Temple Art Lofts stand out as a model for affordable development that transforms lives. The historic preservation and adaptive reuse of the 1917 Masonic Temple and adjacent 1872 City Hall building transformed two dilapidated and foreclosed upon buildings into 29 affordable live/work lofts for artists. The project features artist studio space and a fully renovated performance hall. Ground floor retail space will include a café and office space for nonprofit arts organizations.

Temple Art Lofts were partially financed using Low Income Housing Tax Credits.

FEDERAL and STATE

INVESTMENT are ESSENTIAL

California's long-standing housing crisis

demands a comprehensive and sustainable plan to increase the supply of housing affordable to families struggling to get by. Increasing the supply of housing will not only stabilize families, it will create jobs and make California competitive again.

The Housing Affordability Crisis is Solvable

Lives have already been positively changed in your district by affordable developments. Everyone talks about California's high cost of housing—this is the moment bold leaders like you can support bold solutions to do something about it.

Use your legislative power to invest significant state funds in housing to lift more of your constituents out of poverty and create a meaningful legacy you can be proud of.

Close the Gap

Developers have to pull together

a complicated array of public and private funding sources to build affordable apartments. But, massive state and federal disinvestment in housing has left a huge and growing gap, making affordable home development less feasible.

