

THERE'S NO PLACE LIKE HOME

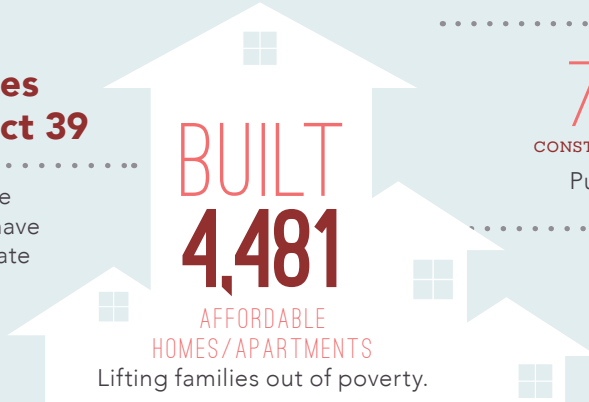
..... in the

39TH ASSEMBLY DISTRICT

Home is the foundation for life. All success begins with having an affordable place to live.

Transforming Lives in Assembly District 39

Since 1986, affordable-home developers in your district have worked through public-private partnerships and:



CREATED

7,214 and **1,972**
CONSTRUCTION JOBS PERMANENT JOBS

Putting constituents back to work.

GENERATED

\$139 MILLION
in ANNUAL ECONOMIC ACTIVITY

Boosting the local economy.

HARDING AVE



Harding Avenue Apartments stand out as a model for affordable development that transforms lives. Located in San Fernando, this project includes 29 units 1- and 3-bedroom units for low-income families, with 11 units dedicated for formerly homeless families. The community includes a zen garden, playground, community garden, music room, community room, teaching kitchen and meeting room. It has been certified Green point rated PLATINUM and includes solar hot water heating and solar electric.

The project was partially financed using Low Income Housing Tax Credits.

FEDERAL and STATE

INVESTMENT *are* ESSENTIAL

California's long-standing housing crisis

demands a comprehensive and sustainable plan to increase the supply of housing affordable to families struggling to get by. Increasing the supply of housing will not only stabilize families, it will create jobs and make California competitive again.

The Housing Affordability Crisis is Solvable

Lives have already been positively changed in your district by affordable developments. Everyone talks about California's high cost of housing—this is the moment leaders like you can support bold solutions to do something about it.

Use your legislative power to invest significant state investment in housing to lift more of your constituents out of poverty and create a meaningful legacy you can be proud of.

Close the Gap

Developers have to pull together

a complicated array of public and private funding sources to build affordable apartments. But, massive state and federal disinvestment in housing has left a huge and growing gap, making affordable home development less feasible.

