

# THERE'S NO PLACE LIKE HOME

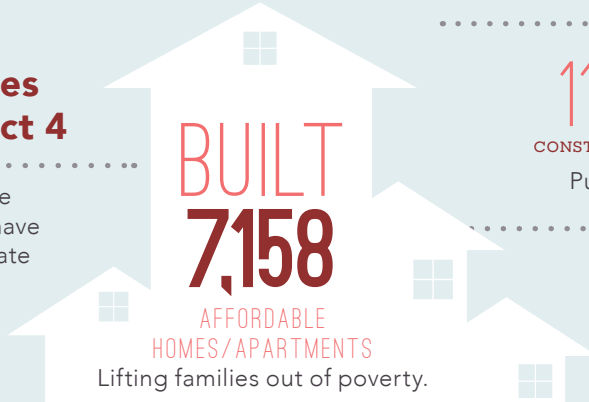
..... in the .....

## 4<sup>TH</sup> ASSEMBLY DISTRICT

Home is the foundation for life. All success begins with having an affordable place to live.

### Transforming Lives in Assembly District 4

Since 1986, affordable-home developers in your district have worked through public-private partnerships and:



#### CREATED



Putting constituents back to work.

#### GENERATED



in ANNUAL ECONOMIC ACTIVITY  
Boosting the local economy.



**The Reserve at Napa stands out** as a model for affordable development that transforms lives. Located in the heart of Wine Country, the project offers 117 one and two bedroom affordable apartment homes to residents aged 62 and over. The community has lush landscaping and included the restoration of the Historic Grant House and Water Tower. This convenient location is within walking distance of shopping, banking and transportation, taking care of everything you may need.

This development was partially financed using Low Income Housing Tax Credits.

## FEDERAL and STATE

INVESTMENT are ESSENTIAL

### California's long-standing housing crisis

demands a comprehensive and sustainable plan to increase the supply of housing affordable to families struggling to get by. Increasing the supply of housing will not only stabilize families, it will create jobs and make California competitive again.

## The Housing Affordability Crisis is Solvable

**Lives have already been positively** changed in your district by affordable developments. Everyone talks about California's high cost of housing—this is the moment bold leaders like you can support bold solutions to do something about it.

Use your legislative power to invest significant state funds in housing to lift more of your constituents out of poverty and create a meaningful legacy you can be proud of.

### Close the Gap

#### Developers have to pull together

a complicated array of public and private funding sources to build affordable apartments. But, massive state and federal disinvestment in housing has left a huge and growing gap, making affordable home development less feasible.

