

# THERE'S NO PLACE LIKE HOME

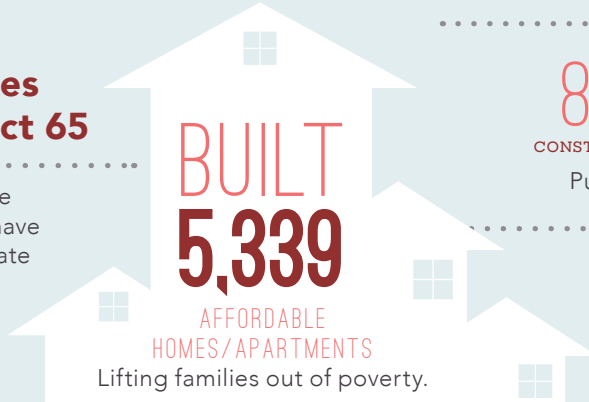
..... in the .....

## 65<sup>TH</sup> ASSEMBLY DISTRICT

Home is the foundation for life. All success begins with having an affordable place to live.

### Transforming Lives in Assembly District 65

Since 1986, affordable-home developers in your district have worked through public-private partnerships and:



### CREATED



Putting constituents back to work.

### GENERATED



in ANNUAL ECONOMIC ACTIVITY  
Boosting the local economy.



**Park Landing stands out** as a model for affordable development that transforms lives. This award-winning infill development features an expansive green roof above the parking area. A mixture of native drought-tolerant plants, succulents, and tall grasses accentuate active and passive outdoor spaces. The park-like setting also includes an Imagination Playground as well as barbecue areas, bocce ball court, and a walking trail.

This project was partially financed using Low Income Housing Tax Credits and the state Multifamily Housing Program.

## FEDERAL and STATE

INVESTMENT *are* ESSENTIAL

California's long-standing housing crisis demands a comprehensive and sustainable plan to increase the supply of housing affordable to families struggling to get by. Increasing the supply of housing will not only stabilize families, it will create jobs and make California competitive again.

## The Housing Affordability Crisis *is* Solvable

Lives have already been positively changed in your district by affordable developments. Everyone talks about California's high cost of housing—this is the moment leaders like you can support bold solutions to do something about it.

Use your legislative power to invest significant state investment in housing to lift more of your constituents out of poverty and create a meaningful legacy you can be proud of.

### Close the Gap

Developers have to pull together a complicated array of public and private funding sources to build affordable apartments. But, massive state and federal disinvestment in housing has left a huge and growing gap, making affordable home development less feasible.

