

# THERE'S NO PLACE LIKE HOME

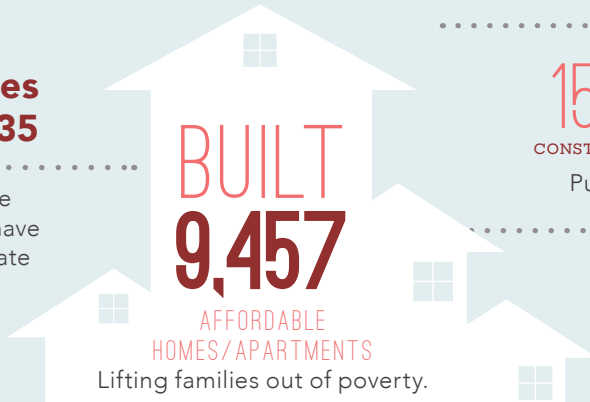
..... *in the* .....

## 35<sup>TH</sup> SENATE DISTRICT

Home is the foundation for life. All success begins with having an affordable place to live.

### Transforming Lives in Senate District 35

Since 1986, affordable-home developers in your district have worked through public-private partnerships and:



#### CREATED

**15,226** and **4,161**  
CONSTRUCTION JOBS PERMANENT JOBS

Putting constituents back to work.

#### GENERATED

**\$293** MILLION

in ANNUAL ECONOMIC ACTIVITY  
Boosting the local economy.

### SAGE PARK



**Sage Park stands out** as a model for affordable development that transforms lives. This 90-unit affordable family development is located on the north side of the Gardena High School campus. In addition to providing a service coordinator to develop individualized support service plans for each household, this project included the construction of a Joint Use Facility with two multipurpose rooms, outdoor patio and a community garden and an obstacle training course that will be used by the LAPD's Juvenile Impact Training program.

This project was partially financed using Low Income Housing Tax Credits.

## FEDERAL *and* STATE

INVESTMENT *are* ESSENTIAL

### California's long-standing housing crisis

demands a comprehensive and sustainable plan to increase the supply of housing affordable to families struggling to get by. Increasing the supply of housing will not only stabilize families, it will create jobs and make California competitive again.

## The Housing Affordability Crisis *is* Solvable

**Lives have already been positively** changed in your district by affordable developments. Everyone talks about California's high cost of housing—this is the moment bold leaders like you can support bold solutions to do something about it.

Use your legislative power to invest significant state investment in housing to lift more of your constituents out of poverty and create a meaningful legacy you can be proud of.

### Close the Gap

#### Developers have to pull together

a complicated array of public and private funding sources to build affordable apartments. But, massive state and federal disinvestment in housing has left a huge and growing gap, making affordable home development less feasible.

