

THERE'S NO PLACE LIKE HOME

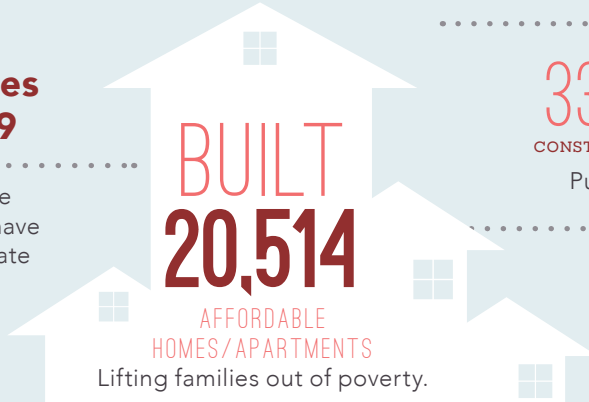
..... in the

9TH SENATE DISTRICT

Home is the foundation for life. All success begins with having an affordable place to live.

Transforming Lives in Senate District 9

Since 1986, affordable-home developers in your district have worked through public-private partnerships and:



CREATED

33,028 and **9,026**
CONSTRUCTION JOBS PERMANENT JOBS

Putting constituents back to work.

GENERATED

\$637 MILLION
in ANNUAL ECONOMIC ACTIVITY

Boosting the local economy.

MACARTHUR STATION



MacArthur Station stands out as a model for affordable development that transforms lives. This multi-phase, mixed-use development located by the MacArthur BART station in North Oakland is scheduled to be complete by 2021.

Of 624 apartments, 108 will be affordable to people who work in retail, grocery stores, hotels, and restaurants. The project will create a vibrant transit-oriented community that enhances bicycle and pedestrian use, with increased and enhanced access to the BART station and connecting public transit lines, reducing traffic and greenhouse gas emissions.

FEDERAL and STATE

INVESTMENT *are* ESSENTIAL

California's long-standing housing crisis

demands a comprehensive and sustainable plan to increase the supply of housing affordable to families struggling to get by. Increasing the supply of housing will not only stabilize families, it will create jobs and make California competitive again.

The Housing Affordability Crisis is Solvable

Lives have already been positively changed in your district by affordable developments. Everyone talks about California's high cost of housing—this is the moment leaders like you can support bold solutions to do something about it.

Use your legislative power to invest significant state funds in housing to lift more of your constituents out of poverty and create a meaningful legacy you can be proud of.

Close the Gap

Developers have to pull together

a complicated array of public and private funding sources to build affordable apartments. But, massive state and federal disinvestment in housing has left a huge and growing gap, making affordable home development less feasible.

